

Benchtop Low Speed Centrifuge Model: TD4

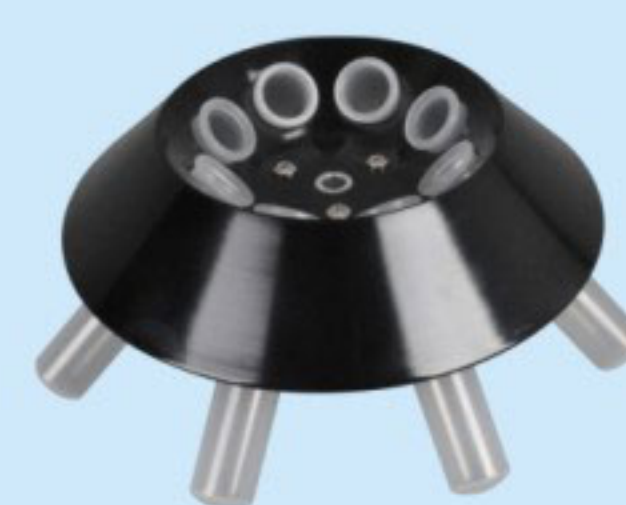
TD4 is a small centrifuge with angle rotors especially designed for use in medical practices.
It accepts common tubes up to a volume of 15ml and accelerates them to a maximum speed of 4000rpm. This corresponds to an RCF of 2100.

Features:

- ☆ Stable speed output even under unstable voltage conditions.
- ☆ With silent-block and shock absorbers that guarantee a smooth and quiet operation.
- ☆ ABS external case.
- ☆ Recall of last set parameters.
- ☆ RPM/RCF adjustable along with the run and value calculating automatically.
- ☆ Time countdown starts at set RPM /RCF.
- ☆ Self-diagnosis for errors.
- ☆ DC brushless motor maintenance free.
- ☆ Portable and easy handle.
- ☆ Velocity hole provides a way of speed detection.
- ☆ Produced according to national and international safety standard (e.g. IEC 61010).
- ☆ ISO9001, ISO13485, CE international standards are met.

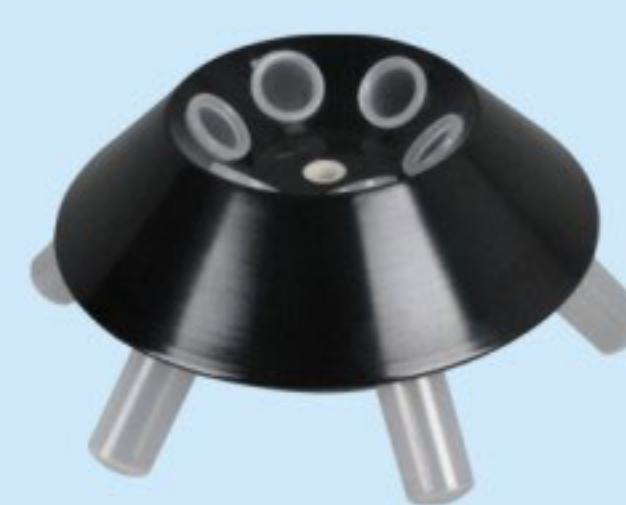


Rotor:



No. 1 Angle Rotor

Max. Speed : 4000rpm
Capacity : 8 x 15ml
Max. RCF : 2100xg
ØxL : 18x98.7mm



No. 2 Angle Rotor

Max. Speed : 4000rpm
Capacity : 6 x 15ml
Max. RCF : 2100xg
ØxL : 18x98.7mm



No. 3 Angle Rotor

Max. Speed : 4000rpm
Capacity : 12 x 5ml
Max. RCF : 2100xg
ØxL : 13.3x78mm

Technical data:

Model	TD4
Max. Speed	4000rpm
Max. RCF	2100xg
Max Capacity	12x5ml
Timer	1~99min
Noise	<55db
Motor	Brushless Motor
Motor Power	60W
Voltage	100~ 240V 50/60Hz 5A
N.W.	6kg
G.W.	6.3kg
Dimension	300x270x210mm (LxWxH)
Package Dimension	365x345x300mm (LxWxH)